



Poetry of Light

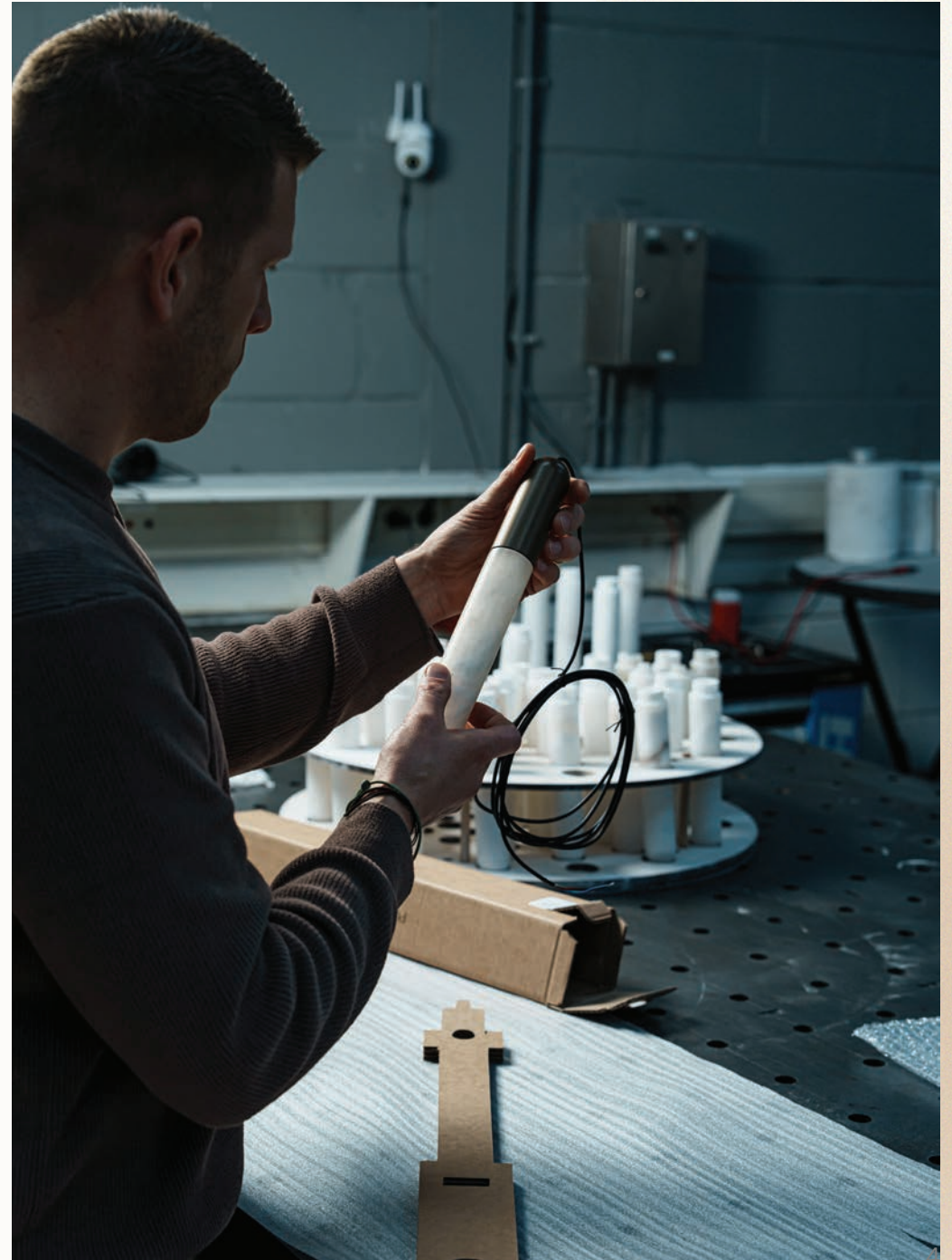
Table of contents

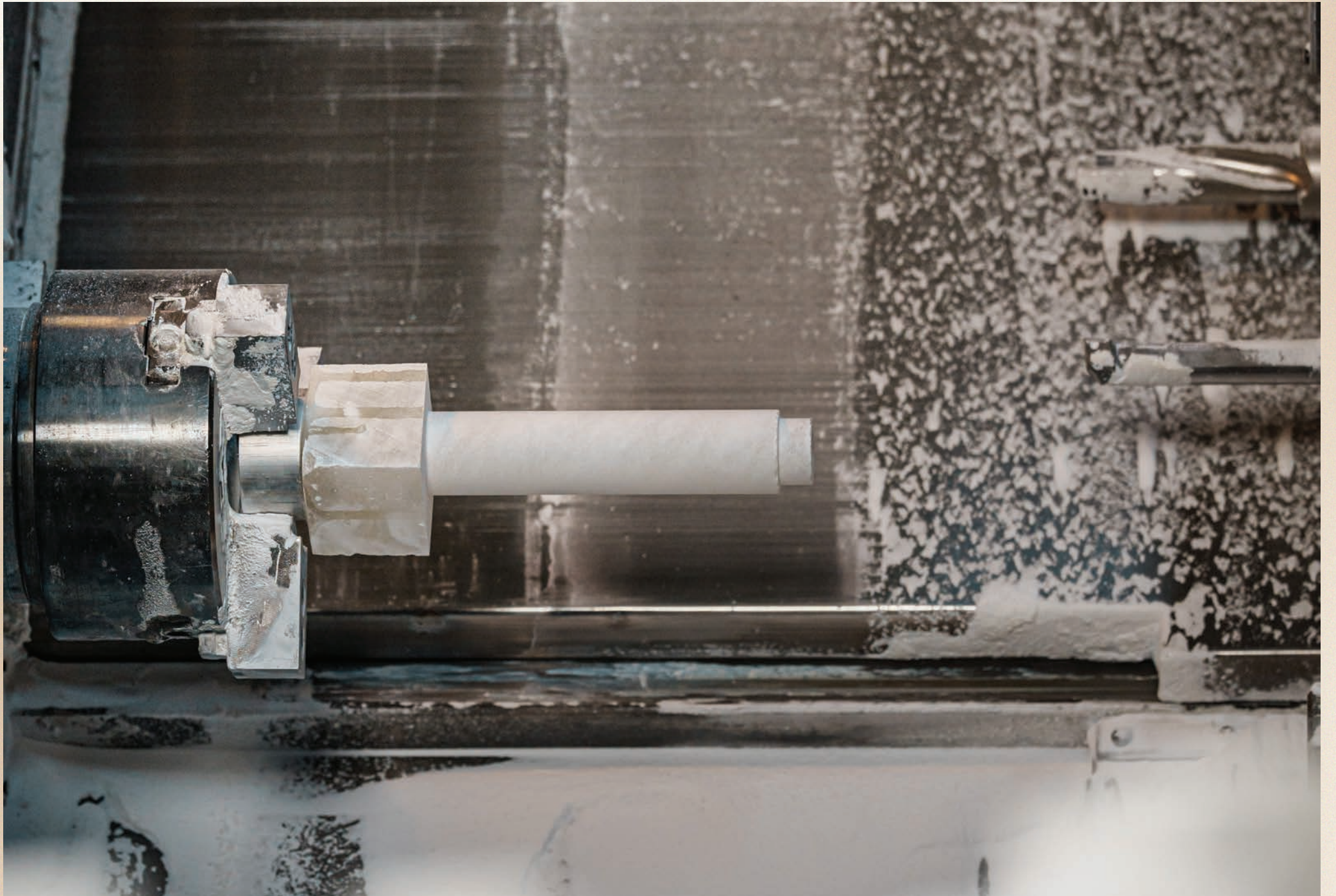
NILA - The Company	4
Ceiling Lighting	8
Wall Lighting	21
Outdoor Lighting	30
Custom Made Products	34
Accessories	36
Where to Buy	38

NILA - The Company

NILA, which stands for 'New Innovations in Lighting Architecture', is a Dutch company dedicated to creating unique light artworks that seamlessly combine functionality and aesthetics. Founded in 2023, in their studio, NILA transforms alabaster, a stone with a rich history, into stunning light objects that enrich any room. Each design is a fusion of traditional craftsmanship and modern technology, combining handcrafted details with high-quality LED elements for durability and safety.

NILA works closely with architects, designers and retailers to provide tailor-made lighting solutions that meet specific visions and needs. Their collection includes a variety of designs, from pendant luminaires to wall fixtures, each with its own story and character. With a team of passionate craftsmen and designers, NILA strives to transform light into an inspiring art form that radiates both emotion and functionality.







Alabaster

Alabaster is a soft, translucent stone consisting mainly of gypsum or calcite. It is known for its delicate and elegant appearance and has been used for centuries for works of art, sculptures and decorative objects.

Alabaster is valued for its natural light transmittance, making it ideal for lighting fixtures such as lamps and wall panels. When illuminated, it emits a warm and diffuse glow, which contributes to a luxurious and atmospheric ambiance. This is why NILA uses alabaster in their designs.

There are two main types of alabaster

Calcite alabaster – Harder and more durable, usually with a warmer, marble-like appearance.



Plaster Alabaster – Softer and easier to work with, often white or light-colored.





Chapter 02

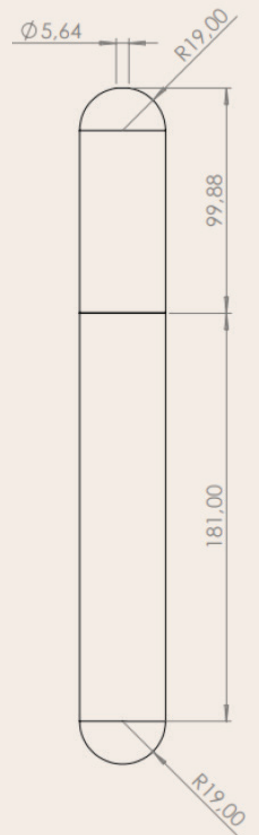
Ceiling Lighting



Pillar Pendant

The Pillar Pendant seamlessly blends minimalism with strength. Inspired by the simple yet impactful forms of columns, this pendant light exudes both sophistication and presence. Its sleek lines and geometric silhouette introduce tranquility and balance to any space, while the gentle illumination from the alabaster stone fills the room with a warm glow.

Dimensions	280 x 38 x 38 mm
Power	6 watt
Light source	Bridgelux LED module
CCT	2700K
CRI	90
Lifetime	>50.000h
Input voltage	35V
mA	110-150
Cable length	3 mtr
Dimmable	Yes
Driver	External, excluded
IP rating	IP20
Material	Alabaster & aluminium
Colour	Bronze
Warranty	2 years
Ceiling rose	Excluded



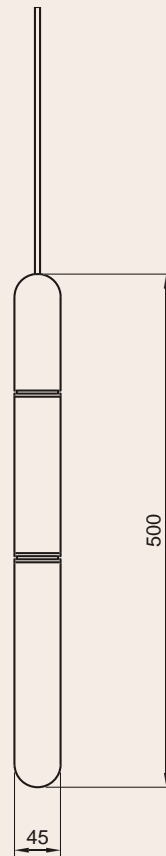




Maya Pendant

Each Maya Pendant is meticulously handcrafted and custom-finished, utilizing carefully selected hardwoods to ensure both aesthetic appeal and durability. This design serves not only as a functional light source but also as an elegant statement piece, harmoniously fitting into exclusive interiors. The combination of natural stone and wood imparts a refined craftsmanship, achieving a balance between luxury and warmth.

Dimensions	450 x 45 x 45 mm
Power	6 watt
Light source	Bridgelux LED module
CCT	2700K
CRI	90
Lifetime	>50.000h
Input voltage	35V
mA	110-150
Cable length	3 mtr
Dimmable	Yes
Driver	External, excluded
IP rating	IP20
Material	Alabaster & wood
Warranty	2 years
Ceiling rose	Excluded



Clear Pendant

The Clear Pendant is an elegant fixture crafted from high-quality alabaster, emitting a soft, warm glow when illuminated. Its minimalist design, complemented by a sleek metal finish, makes it an ideal choice for sophisticated, modern spaces. The fusion of alabaster and metal highlights the luxury and craftsmanship of this unique lighting piece.

Dimensions 350 x 63 x 63 mm

Alabaster dimensions 100 x 63 x 63 mm
150 x 63 x 63 mm
200 x 63 x 63 mm

Power 6 watt

Light source Bridgelux LED module

CCT 2700K

CRI 90

Lifetime >50.000h

Input voltage 35V

mA 110-150

Cable length 3 mtr

Dimmable Yes

Driver External, excluded

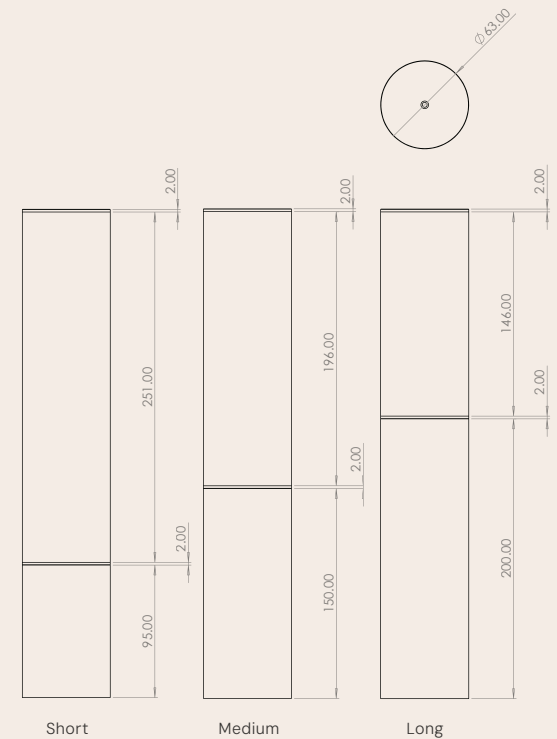
IP rating IP20

Material Alabaster & aluminium

Colour Bronze

Warranty 2 years

Ceiling rose Excluded



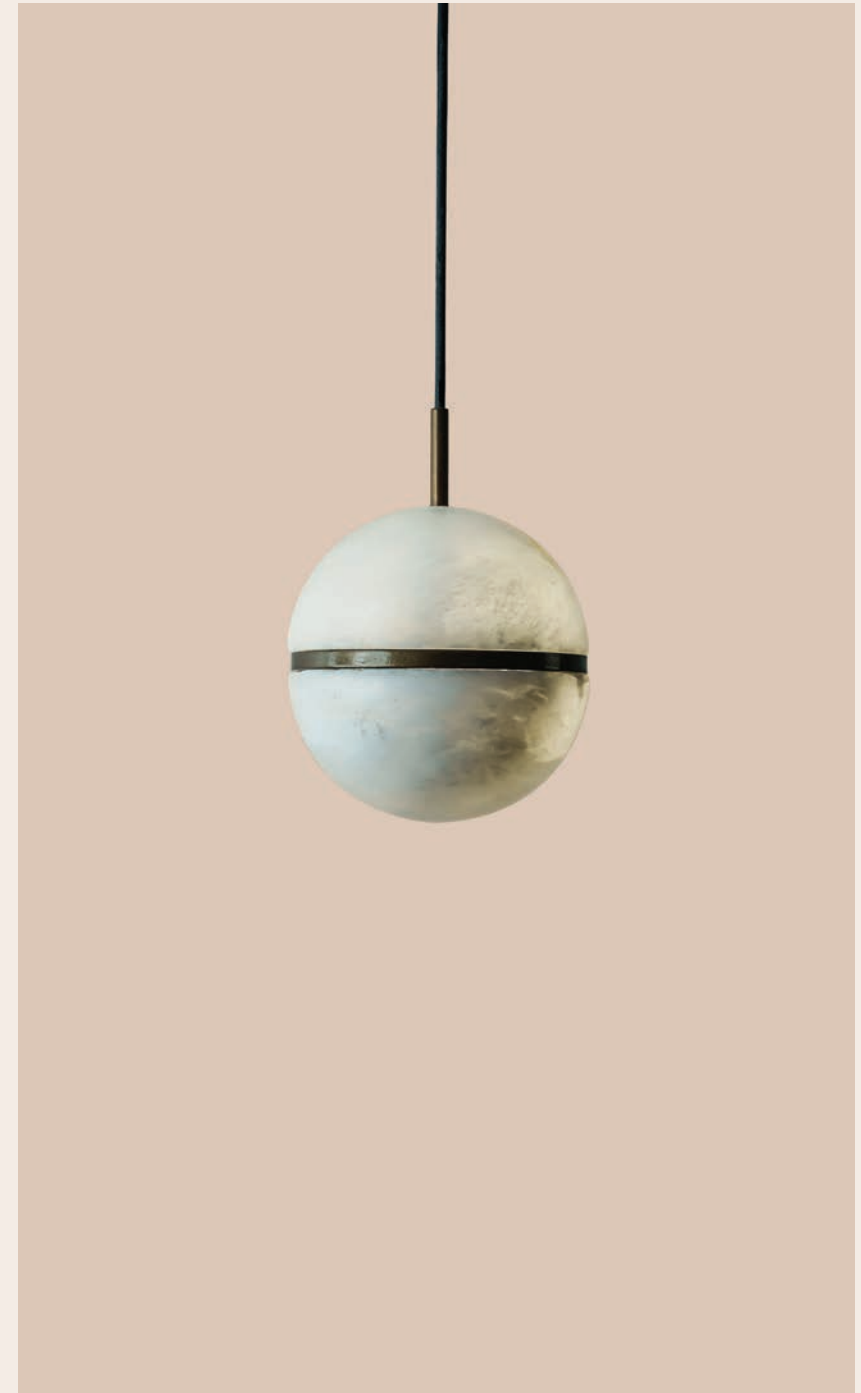
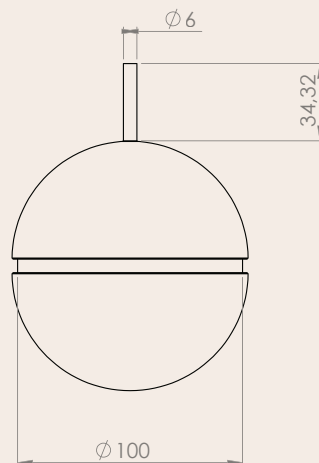
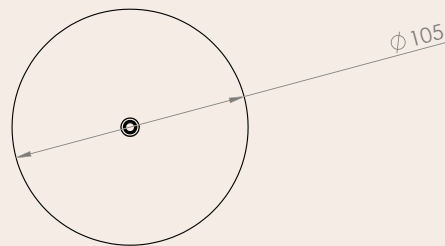




Double Ivy Pendant

The Double Ivy Pendant is a refined wall lamp that merges the warm allure of alabaster with contemporary metal accents. It consists of two stacked alabaster segments, separated by a luxurious metal detail at the center. This metallic element introduces a modern and sophisticated touch. The soft, warm glow emitted through the alabaster creates a cozy and inviting atmosphere, making it an excellent addition to interiors seeking a blend of cultural inspiration and modern elegance.

Dimensions	100 x 100 mm
Power	16 watt
Light source	LED PCB
CCT	2700K
CRI	90
Lifetime	>50.000h
Input voltage	24V
mA	350
Cable length	3 mtr
Dimmable	Yes
Driver	External, excluded
IP rating	IP20
Material	Alabaster & aluminium
Colour	Bronze
Warranty	2 years
Ceiling rose	Excluded



Circle Pendant

The Circle Pendant is an exclusive lighting fixture crafted from a single piece of alabaster, available in diameters ranging from 40 cm to 100 cm. The natural, semi-transparent quality of alabaster disperses a gentle, warm light, imparting a refined and luxurious ambiance to any room. Its seamless construction ensures a pure and elegant appearance, free from visible seams or interruptions.

Dimensions	60 x 45 x 400 mm
	60 x 45 x 600 mm
	60 x 45 x 800 mm
	60 x 45 x 900 mm
	60 x 45 x 1000 mm

Power	up to 50 watt
-------	---------------

Light source	LED PCB
--------------	---------

CCT	2700K
-----	-------

CRI	90
-----	----

Lifetime	>50.000h
----------	----------

Input voltage	24V
---------------	-----

Cable length	3 mtr
--------------	-------

Dimmable	Yes
----------	-----

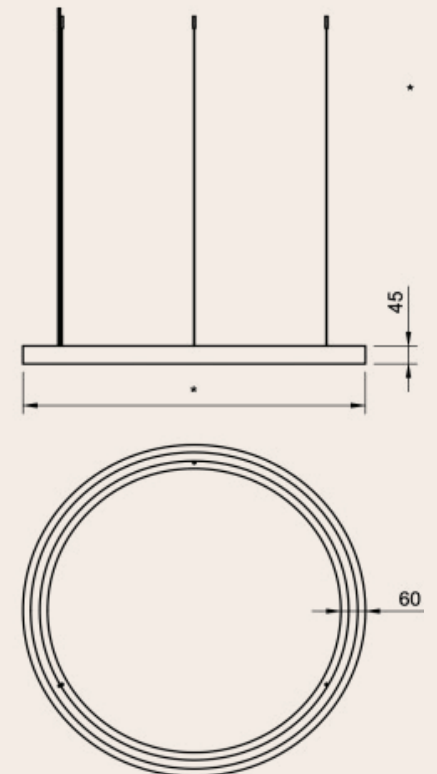
Driver	External, excluded
--------	--------------------

IP rating	IP20
-----------	------

Material	Alabaster
----------	-----------

Warranty	2 years
----------	---------

Ceiling rose	Excluded
--------------	----------

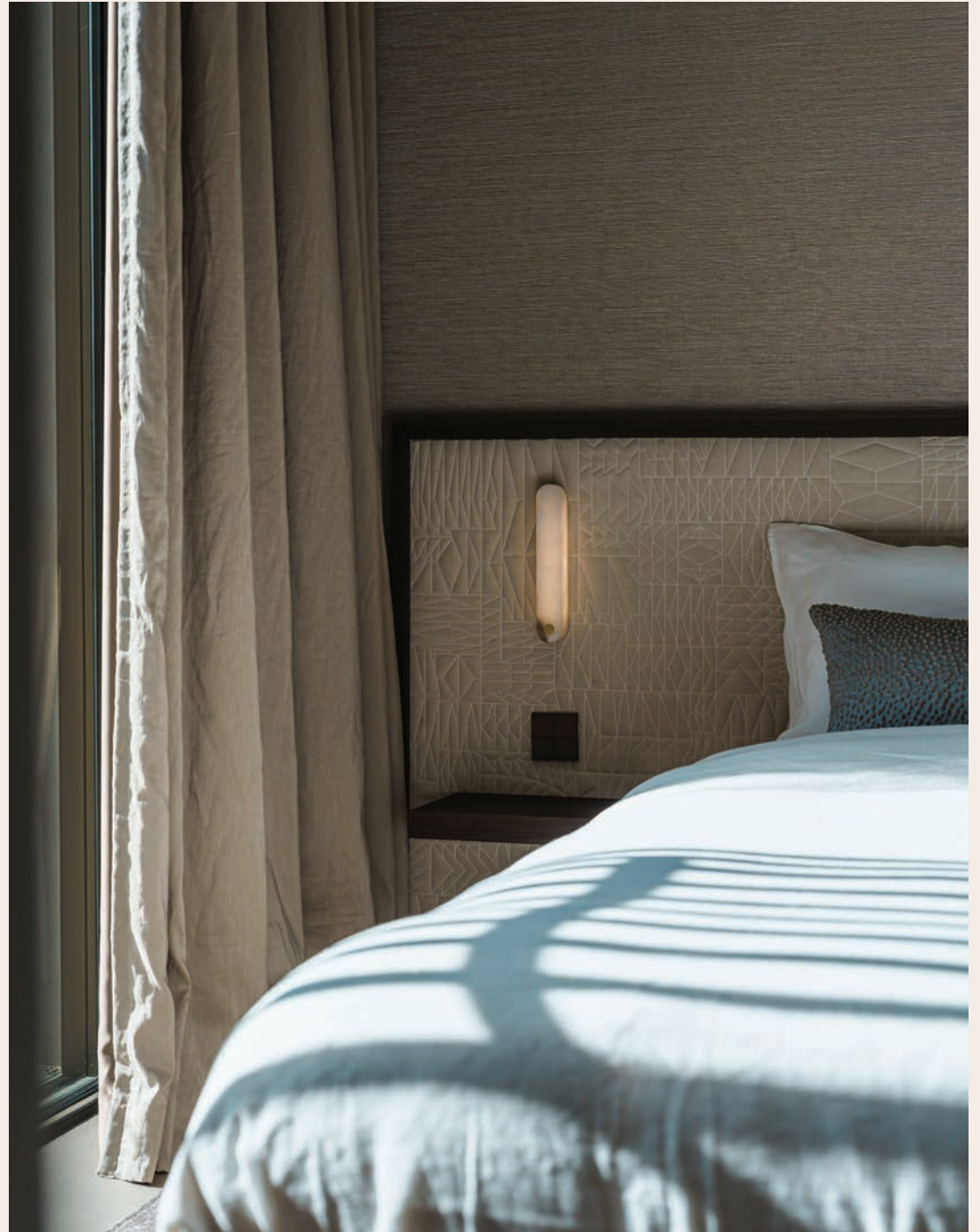






Chapter 03

Wall Lighting





Flush small, medium & large

The Flush fixtures harmoniously blend the timeless nature of alabaster with a sleek, modern design, offering a sophisticated and stylish addition to any interior. Utilizing alabaster's delicate, translucent properties, these fixtures provide warm, subtle lighting that transforms a space. Each piece's unique pattern and texture render every fixture a standalone artwork, ensuring a distinctive and personal touch to your decor.

Dimensions small 265 x 45 x 45 mm

Dimensions medium 450 x 45 x 45 mm

Dimensions large 1000 x 45 x 45 mm

Power small 5,5 watt

Power medium 11 watt

Power large 25 watt

Light source LED

CCT 2700K

CRI 90

Lifetime >50.000h

Input voltage 24V

mA Small 200

mA Medium 400

mA Large 800

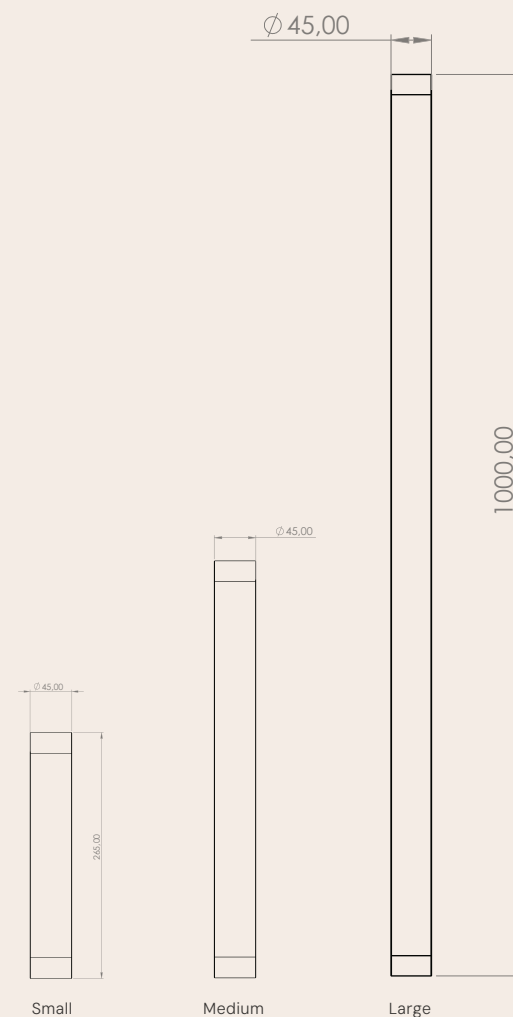
Dimmable Yes

Driver External, excluded

IP rating IP20

Material Alabaster

Warranty 2 years



Small

Medium

Large

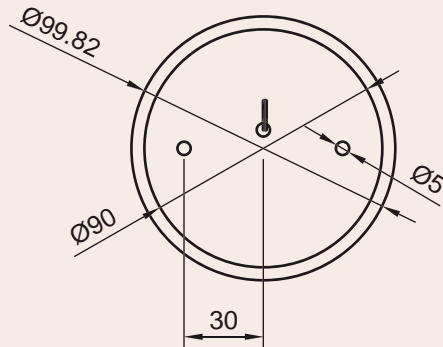




Ivy

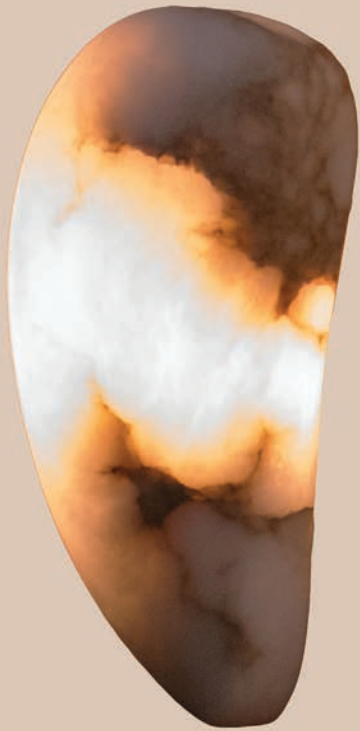
The Ivy is a beautiful example of the fusion between nature and design. Inspired by the organic forms of ivy, this lamp brings natural beauty into your interior. Its design is both playful and elegant, featuring flowing lines that reflect nature's vitality, while the sleek, minimalist frame emphasizes its modern aesthetic.

Dimensions	90 mm
Power	8 watt
Light source	LED PCB
CCT	2700K
CRI	90
Lifetime	>50.000h
Input voltage	24V
mA	450
Dimmable	Yes
Driver	External, excluded
IP rating	IP20
Material	Alabaster & brass
Warranty	2 years



Leaf

The Leaf is an elegant wall lamp inspired by the natural beauty of leaves. It features an alabaster component with an organic, flowing shape reminiscent of a leaf gently swaying in the wind. This design creates a dynamic and lively effect, making it a striking element in any interior. The warm, diffuse glow from the alabaster adds an inviting atmosphere to the space. The Leaf wall lamp is an ideal choice for those wishing to incorporate nature's beauty into modern design.



Dimensions	200 x 110 x 45
Power	8 watt
Light source	LED PCB
CCT	2700K
CRI	90
Lifetime	>50.000h
Input voltage	24V
mA	450
Dimmable	Yes
Driver	External, excluded
IP rating	IP20
Material	Alabaster & brass
Warranty	2 years

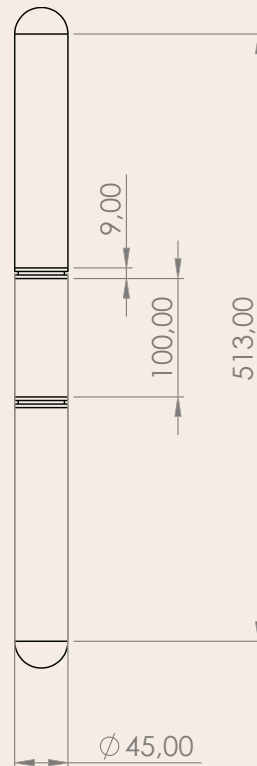




Maya wall

The Maya Wall is an elegant wall lamp blending Maya-inspired aesthetics with modern design. Two stacked alabaster cylinders are divided by a refined metal detail wrapped in premium leather. Its soft, warm glow adds a cozy, inviting ambiance—ideal for interiors that balance cultural richness with contemporary style.

Dimensions	700 x 45 x 45 mm
Power	12 watt
Light source	Bridgelux LED module
CCT	2700K
CRI	90
Lifetime	>50.000h
Input voltage	24V
mA	350
Cable length	3 mtr
Dimmable	Yes
Driver	External, excluded
IP rating	IP20
Material	Alabaster
Warranty	2 years
Ceiling rose	Excluded





Chapter 04

Outdoor Lighting



Alba Lume Outdoor

In exclusive collaboration with designer Eric Kuster and L'atelier Objet, NILA presents the Alba Lume collection: a trio of caramel-colored alabaster table lamps on bronze-colored metal bases. Wireless, rechargeable, and touch-dimmable, they offer three light temperatures—warm, neutral, and cool white—for any mood. A perfect fusion of luxury, craftsmanship, and modern tech, Alba Lume turns lighting into art.

Dimensions	60 x 45 x 400 mm
	60 x 45 x 600 mm
	60 x 45 x 800 mm
	60 x 45 x 900 mm
	60 x 45 x 1000 mm

Power	24 watt
-------	---------

Light source	LED PCB
--------------	---------

CCT	2700K
-----	-------

CRI	90
-----	----

Lifetime	>50.000h
----------	----------

Input voltage	24V
---------------	-----

mA	350
----	-----

Cable length	3 mtr
--------------	-------

Dimmable	Yes
----------	-----

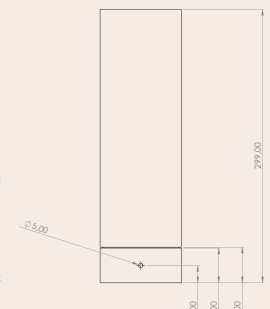
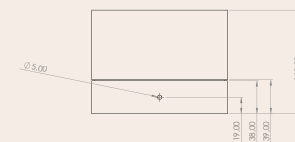
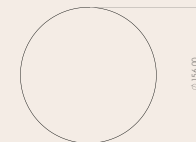
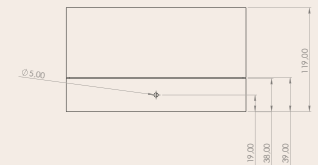
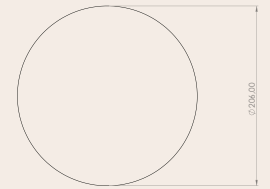
Driver	External, excluded
--------	--------------------

IP rating	IP20
-----------	------

Material	Alabaster
----------	-----------

Warranty	2 years
----------	---------

Ceiling rose	Excluded
--------------	----------







Chapter 05

Custom Made Products

Craftmanship is our core value. Therefore, we aim to create unique products that perfectly match the wishes and needs of our clients. Therefore, we follow a diligent process to customize and develop our new products.

The customization process at NILA begins with a thorough consultation to understand the specific requirements and preferences of the client. A design is then created that takes into account the space, style and desired atmosphere. By using high-quality materials and craftsmanship, NILA ensures that each lighting object is not only a source of illumination, but also a work of art in itself.



Whether it is a single luminaire or a complete family of fixtures, NILA's customization service guarantees unique and personal lighting solutions that reflect the identity and style of the client.

By working closely with architects, designers and individuals, NILA develops lighting solutions that are both functional and aesthetically pleasing.

Accessories

NILA stands out not only through their unique lighting designs, but also through their smart, self-designed accessories that take every project to the next level. With a deep understanding of lighting technology and craftsmanship, NILA develops innovative solutions that optimize both the installation and functionality of their lighting objects.

For example, NILA creates custom plaster molds that allow us to realize complex shapes and structures, giving every design a seamless finish. In addition, they develop stucco frames for pendant lights, allowing lighting to be elegantly integrated into ceilings without visible fixings, resulting in a sleek and refined result.





In addition to the physical design of the luminaires, NILA also has expertise in electronics. They program their own LED drivers, giving them full control over light intensity, color temperature and energy efficiency. This ensures that their lighting is perfectly tailored to the desired atmosphere and functionality.

Through this combination of craftsmanship, innovation and technical know-how, NILA offers customized solutions that go beyond standard lighting – every detail is carefully designed and optimized for an exclusive and high-quality lighting experience.



Chapter 07

Where to Buy

NILA's exclusive lighting objects are exclusively available through a carefully selected network of lighting specialists, lighting studios and retailers. This not only guarantees the highest quality in service and advice but also ensures that each customer receives the best guidance in choosing and implementing their custom lighting.

In line with their focus on craftsmanship and exclusivity, NILA does not sell directly to individual designers and does not offer online sales. This means that each lighting object is supplied via specialist partners who have the expertise and experience to help customers with the correct application and installation.

With this approach, NILA guarantees that their lighting is applied in the right way, fully tailored to the specific requirements of each project. This makes their custom solutions not only unique, but also perfectly integrated into high-quality interior and architectural designs.

Material & Product Notes

NILA products are handmade from natural alabaster. Variations in color and veining are normal and not grounds for return. Specific features (e.g. veining) cannot be requested. All products are crafted with care. Installation instructions included. Compatible with DALI, Casambi, and/or mains dimming. For details, contact sales or your local dealer. Full terms: Algemene voorwaarden – Nila.

